

Corrosion Resistant Engineered Solutions



BEV Gold-04

SEALMASTER



OVERVIEW

BEV Gold Mounted Ball Bearing

Housing Features

- 316 Passivated Stainless Steel
- Advanced Casting Technology
- Solid Construction - Machined Base
- Specialized Unit Identification System

Insert Features

- TDC Thin Dense Chrome Coated 52100 Steel Races
- 400 Series Stainless Steel Balls
- Wide Outer Race Design
- Sealmaster® Exclusive Pin & Dimple System
- Spring Loaded Ultraguard Seal
- Endurion Coated Diamond Faceted Set Screws
- H1 USDA/FDA Compliant Synthetic Food Grade Grease

Component Material

- Balls:** 400 Series Stainless Steel
- Retainer:** Unique Land Riding Retainer
- Bearing Races:** TDC Coated 52100 Steel
- Flinger:** Corrosion Resistant
- Housing:** 316 Passivated Stainless Steel
- Grease Fitting:** 300 Series Stainless Steel
- Grease:** H1 USDA/FDA Compliant Synthetic Food Grade

Housing Benefits

- Highest Amount of Corrosion Resistance Currently Available for Stainless Steel Bearing Housings
- Twice the Tensile Strength of Gray Cast Iron
- Smooth Surface Finish with Fewer Places for Bacteria to Grow
- Minimized Gaps, No Fillings, Smooth Easy to Clean Surfaces
- Permanent Brand & Nomenclature Marking - Easy to Reorder

Insert Benefits

- Comparable Corrosion Resistance to 400 Series Stainless Steel without Compromising Fatigue Life
- Extra Corrosion Resistance
- Extra Grease Capacity - Extended Performance
- Direct Lubrication Path and Larger Insert Misalignment
- High Sealing Performance, Wear Compensating
- Corrosion Resistant - Reliable Performance
- Food Processing Approved Lubricant

Consult Technical Customer Service for Additional Information on:

- Chemical Resistance
- Installation and Maintenance Instructions
- Load Ratings
- Interchange Information
- Dimensional Information
 - Grease Fittings
 - Set Screw Sizes
 - Misalignment Capabilities

Technical Assistance

Valparaiso, IN 46383
219-465-2211

Customer Service
Florence, KY 41022
859-342-7900
1-800-626-2120

Customer Service
Maysville, KY 41056
606-564-2011
1-800-626-2120

Customer Service - West
Chino, CA 91710
909-591-9561
1-800-626-2120

Customer Service - Canada
Unionville, ONT L3R 2E4
905-294-9330
1-800-268-4149

www.emerson-ept.com

The CRES Family of Products



EMERSON. CONSIDER IT SOLVED.

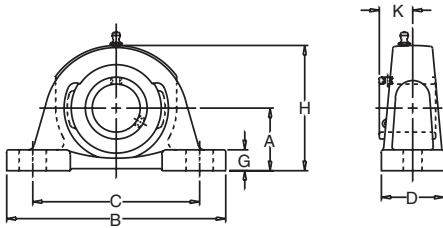


Corrosion Resistant Engineered Solutions

DIMENSIONS

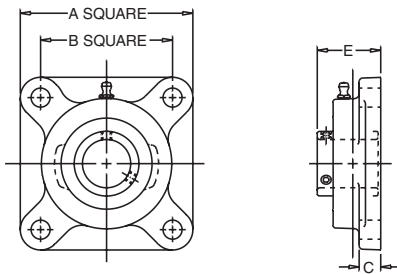


Pillow Block



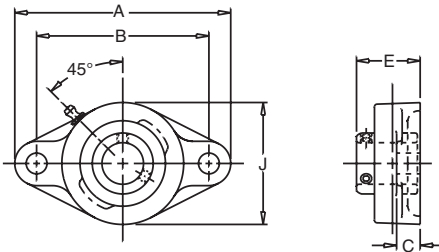
| DESCRIPTION | SHAFT SIZE | A | B | C MAX | C MIN | D | G | H | K | BOLT SIZE |
|-------------|------------|---------|--------|--------|---------|-------|-------|---------|--------|-----------|
| CRPS-12 | 3/4 | 1 5/16 | 5 | 4 1/8 | 3 3/8 | 1 1/2 | 1/2 | 2 9/16 | 23/32 | 3/8 |
| CRPS-16 | 1 | 1 7/16 | 5 1/2 | 4 1/2 | 3 3/4 | 1 1/2 | 1/2 | 2 13/16 | 13/16 | 3/8 |
| CRPS-19 | 1 3/16 | 1 11/16 | 6 1/2 | 5 1/16 | 4 7/16 | 1 7/8 | 9/16 | 3 3/8 | 7/8 | 1/2 |
| CRPS-20R | 1 1/4 R | 1 11/16 | 6 1/2 | 5 1/16 | 4 7/16 | 1 7/8 | 9/16 | 3 3/8 | 7/8 | 1/2 |
| CRPS-20 | 1 1/4 | 1 7/8 | 6 9/16 | 5 5/16 | 4 11/16 | 1 7/8 | 5/8 | 3 3/4 | 1 | 1/2 |
| CRPS-23 | 1 7/16 | 1 7/8 | 6 9/16 | 5 5/16 | 4 11/16 | 1 7/8 | 5/8 | 3 3/4 | 1 | 1/2 |
| CRPS-24 | 1 1/2 | 1 15/16 | 7 1/4 | 5 7/8 | 4 7/8 | 2 1/8 | 11/16 | 3 15/16 | 1 3/16 | 1/2 |
| CRPS-27 | 1 11/16 | 2 1/8 | 7 1/2 | 6 1/16 | 5 7/16 | 2 1/8 | 11/16 | 4 1/4 | 1 3/16 | 1/2 |
| CRPS-31 | 1 15/16 | 2 1/4 | 8 1/8 | 6 1/2 | 6 | 2 3/8 | 3/4 | 4 9/16 | 1 9/32 | 5/8 |
| CRPS-35 | 2 3/16 | 2 1/2 | 8 5/8 | 7 | 6 1/2 | 2 3/8 | 3/4 | 5 | 1 5/16 | 5/8 |
| CRPS-39 | 2 7/16 | 2 3/4 | 9 1/2 | 7 5/8 | 6 7/8 | 2 3/4 | 7/8 | 5 9/16 | 1 9/16 | 5/8 |

4 Bolt Flange



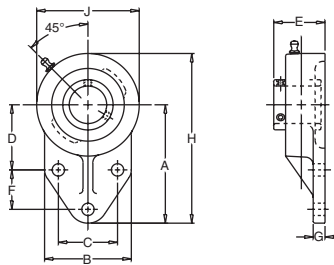
| DESCRIPTION | SHAFT SIZE | A | B | C | E | BOLT SIZE |
|-------------|------------|-------|-------|-------|---------|-----------|
| BF-12 | 3/4 | 3 3/8 | 2 1/2 | 7/16 | 1 9/32 | 3/8 |
| BF-16 | 1 | 3 3/4 | 2 3/4 | 17/32 | 1 7/16 | 7/16 |
| BF-19 | 1 3/16 | 4 1/4 | 3 1/4 | 17/32 | 1 9/16 | 7/16 |
| BF-20R | 1 1/4 R | 4 1/4 | 3 1/4 | 17/32 | 1 9/16 | 7/16 |
| BF-20 | 1 1/4 | 4 5/8 | 3 5/8 | 9/16 | 1 3/4 | 1/2 |
| BF-23 | 1 7/16 | 4 5/8 | 3 5/8 | 9/16 | 1 3/4 | 1/2 |
| BF-24 | 1 1/2 | 5 1/8 | 4 | 9/16 | 2 1/64 | 1/2 |
| BF-27 | 1 11/16 | 5 3/8 | 4 1/8 | 9/16 | 2 3/64 | 9/16 |
| BF-31 | 1 15/16 | 5 5/8 | 4 3/8 | 9/16 | 2 5/32 | 9/16 |
| BF-35 | 2 3/16 | 6 3/8 | 5 1/8 | 13/16 | 2 5/16 | 5/8 |
| BF-39 | 2 7/16 | 6 7/8 | 5 5/8 | 13/16 | 2 25/32 | 5/8 |

2 Bolt Flange



| DESCRIPTION | SHAFT SIZE | A | B | C | E | J | BOLT SIZE |
|-------------|------------|---------|---------|-------|--------|--------|-----------|
| BFT-12 | 3/4 | 4 13/32 | 3 17/32 | 7/16 | 1 9/32 | 2 1/2 | 3/8 |
| BFT-16 | 1 | 4 7/8 | 3 57/64 | 17/32 | 1 7/16 | 2 3/4 | 7/16 |
| BFT-19 | 1 3/16 | 5 9/16 | 4 19/32 | 17/32 | 1 9/16 | 3 1/4 | 7/16 |
| BFT-20R | 1 1/4 R | 5 9/16 | 4 19/32 | 17/32 | 1 9/16 | 3 1/4 | 7/16 |
| BFT-20 | 1 1/4 | 6 1/8 | 5 1/8 | 9/16 | 1 3/4 | 3 3/4 | 1/2 |
| BFT-23 | 1 7/16 | 6 1/8 | 5 1/8 | 9/16 | 1 3/4 | 3 3/4 | 1/2 |
| BFT-24 | 1 1/2 | 6 3/4 | 5 21/32 | 9/16 | 2 1/64 | 4 1/8 | 1/2 |
| BFT-27 | 1 11/16 | 7 1/16 | 5 27/32 | 9/16 | 2 3/64 | 4 3/8 | 9/16 |
| BFT-31 | 1 15/16 | 7 7/16 | 6 3/16 | 9/16 | 2 5/32 | 4 9/16 | 9/16 |
| BFT-35 | 2 3/16 | 8 1/2 | 7 1/4 | 13/16 | 2 5/16 | 5 1/4 | 5/8 |

Flange Bracket



| DESCRIPTION | SHAFT SIZE | A | B | C | D | E | F | G | H | J | BOLT SIZE |
|-------------|------------|-------|-------|-------|---------|---------|-------|------|-------|-------|-----------|
| CRFBS-12 | 3/4 | 3 | 2 3/8 | 1 1/2 | 1 11/16 | 1 11/32 | 7/8 | 5/16 | 4 1/4 | 2 1/2 | 3/8 |
| CRFBS-16 | 1 | 3 3/8 | 2 1/2 | 1 5/8 | 1 13/16 | 1 1/2 | 1 1/8 | 3/8 | 4 3/4 | 2 3/4 | 3/8 |
| CRFBS-19 | 1 3/16 | 3 3/4 | 2 3/4 | 1 7/8 | 2 1/16 | 1 5/8 | 1 1/4 | 3/8 | 5 3/8 | 3 1/4 | 3/8 |
| CRFBS-20R | 1 1/4 R | 3 3/4 | 2 3/4 | 1 7/8 | 2 1/16 | 1 5/8 | 1 1/4 | 3/8 | 5 3/8 | 3 1/4 | 3/8 |
| CRFBS-20 | 1 1/4 | 4 1/4 | 3 1/4 | 2 | 2 3/8 | 1 7/8 | 1 1/4 | 1/2 | 6 1/8 | 3 3/4 | 1/2 |
| CRFBS-23 | 1 7/16 | 4 1/4 | 3 1/4 | 2 | 2 3/8 | 1 7/8 | 1 1/4 | 1/2 | 6 1/8 | 3 3/4 | 1/2 |

Stainless Steel Bolt on End Caps for 2 Bolt & 4 Bolt Flange Units

| SHAFT SIZE | TWO BOLT OPEN CAP | TWO BOLT CLOSED CAP | FOUR BOLT OPEN CAP | FOUR BOLT CLOSED CAP |
|------------|-------------------|---------------------|--------------------|----------------------|
| 3/4 | N/A | N/A | N/A | N/A |
| 1 | TEO-16 | TEC-16 | FEO-16 | FEC-16 |
| 1 3/16 | TEO-19 | TEC-19 | FEO-19 | FEC-19 |
| 1 1/4 R | TEO-20R | TEC-19 | FEO-20R | FEC-19 |
| 1 1/4 | TEO-20 | TEC-23 | FEO-20 | FEC-23 |
| 1 7/16 | TEO-23 | TEC-23 | FEO-23 | FEC-23 |
| 1 1/2 | TEO-24 | TEC-24 | FEO-24 | FEC-24 |
| 1 11/16 | TEO-27 | TEC-27 | FEO-27 | FEC-27 |
| 1 15/16 | TEO-31 | TEC-31 | FEO-31 | FEC-31 |
| 2 3/16 | TEO-35 | TEC-35 | FEO-35 | FEC-35 |
| 2 7/16 | N/A | N/A | N/A | N/A |

Snap on Polypropylene End Caps for Pillow Block & Flange Bracket Units

| SHAFT SIZE | CLOSED CAP | OPEN CAP |
|------------|------------|----------|
| 3/4 | SEC-12 | SEO-12 |
| 1 | SEC-16 | SEO-16 |
| 1 3/16 | SEC-19 | SEO-19 |
| 1 1/4 R | SEC-19 | SEO-20R |
| 1 1/4 | SEC-23 | SEO-20 |
| 1 7/16 | SEC-23 | SEO-23 |
| 1 1/2 | SEC-24 | SEO-24 |
| 1 11/16 | SEC-27 | SEO-27 |
| 1 15/16 | SEC-31 | SEO-31 |
| 2 3/16 | SEC-35 | SEO-35 |
| 2 7/16 | SEC-39 | SEO-39 |

EPT does not assume responsibility for the accuracy of this document. The information contained herein is based upon current published data at the time of creation.